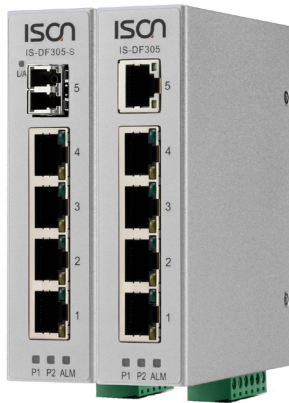


IS-DF305 Series

5-port Fast Ethernet Unmanaged Layer 2 Industrial Ethernet Switch



The ISON IS-DF305 Series are cost-effective unmanaged Fast Ethernet Switches that provide both copper and fiber connectivity according to field needs. With plug-n-play, easy to use, and its compact size, the IS-DF305 Series can easily be used in factory production line, embedded into machine system or applied for any simple network expansion. The IS-DF305 Series provide default network protection functions such as broadcast storm protection function, which can prevent unexpected traffic flood to the network. The IS-DF305 Series is the perfect solution for general application and edge site installation.



Key features

- ▶ 5 / 4 10/100Mb Copper ports with 0 / 1 100FX Single/Multi-mode ports
- ▶ IEEE 802.3x flow control & back-pressure
- ▶ Layer 2 Line-Speed Switching Fabric, non-blocking
- ▶ Broadcast Storm Protection
- ▶ Wide-temperature range (-40~75°C)
- ▶ Redundant power input (12~58 VDC)
- ▶ Reverse power protection
- ▶ Din-Rail or wall mount installation
- ▶ Relay Output Alarm
- ▶ IP 30 Protection
- ▶ Rugged Fanless design
- ▶ 2KV Surge immunity on RJ45 ports
- ▶ 1.5KV Hipot for port isolation

Specification

Ethernet

Operating Mode	Store and Forward, L2 wire-speed/non-blocking switching engine
MAC addresses	1K
Packet Buffer	1 Mbits
Backplane / Switching Fabric	1Gbps

RJ45 Copper ports

Speed	10/100 Mbps
MDI/MDIX Auto-crossover	Support straight or cross wired cables
Auto-negotiation/Duplex	10/100 Mbps speed auto-negotiation; Full & Half Duplex
Ethernet Port Protection	1.5KV VRMS 1minute(Hipot), 2KV surge immunity on RJ45 Copper ports

Fiber Ports

Port Types supported	100 Base Fix type SFP
Fiber port connector	LC connector for fiber ports
Optimal fiber cable	Typical 50 or 62.5/125 μ m for multimode (mm) Typical 8 or 9/125 μ m for single mode (sm)

Protocols & Standards

IEEE 802.3 , IEEE 802.3x, Flow Control, Back Pressure, TCP/UDP
--

Power

Power Input	Redundant Power Input, DC Input, Terminal Block
Input Voltage Range	12-58 VDC
Reverse power protection	YES
Power Consumption	IS-DF305 3.5 Watt, IS-DF305-M 5 Watt, IS-DF305-S 5.5 Watt

Indicators

Power status indication	Power Input status
Ethernet port indication	Link & speed

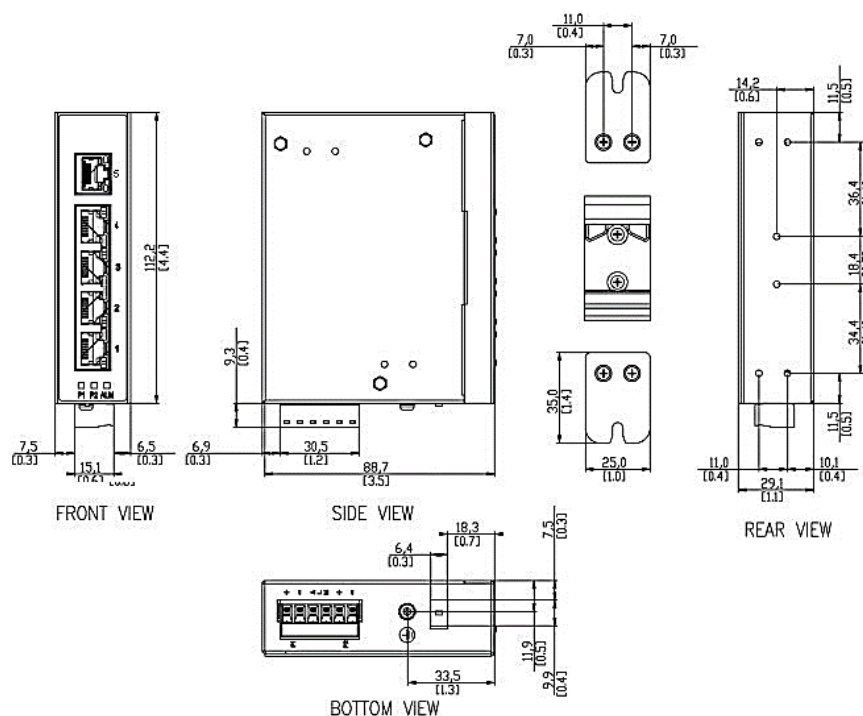
Environmental and Compliances

Operating Temperature	-40~75°C (Cold startup at -40°C)
Storage Temperature	-40~85°C
Humidity	5~95% (Non-Condensing)
Vibration, shock, free fall	IEC-60068-2-6, -27, -32
Certification Compliance	CE, FCC
Electrical safety	CE
EMC	FCC Part 15, CISPR 22 (EN55022) Class A IEC-61000-4-2, -3, -4, -5, -6 (Level 3)
RoHS & WEEE	RoHS (Pb free) and WEEE Compliant
MTBF	>25 years

Mechanical

Protection	IP30
Dimension	109.2mm(H) x 29.1mm (W) x 89.4mm (D) (without DIN rail kit)
Weight	290 g
Installation	DIN-Rail mounting; Wall mounting
Relay Output	1A, 24V, Normal Open

Dimension Diagram



Ordering Information

Available Models	Description	10/100Mb TX	100Mb FX
IS-DF305	Industrial 5 port 10/100 Mb Layer 2 unmanaged Ethernet Switch	5	0
IS-DF305-M	Industrial 5 port 10/100 Mb Layer 2 unmanaged Ethernet Switch, LC connector, 2km	4	1
IS-DF305-S	Industrial 5 port 10/100 Mb Layer 2 unmanaged Ethernet Switch, LC connector, 40km	4	1

Accessories

1. IS-RK2U 19" rack mount kit
2. IS-RK4U 19" rack mount kit
3. IS-PS20-12 Power adaptor

Package Checklist

- IS-DF305 Switch
- Quick Installation Guide (Printed)
- Wall Mount kit /Din-Rail kit